

G	SPECIFICATION
---	---------------

ACTUATING FORCE: $-0.9\text{N}(3.2\text{ozf})\text{MAX}$

RELEASE FORCE : -0.07N(0.25ozf)MIN

F FREE POSITION 17.3 (0.33) MAX

FREE POSITION :- 17.8 (0.70) MAX
±1.2

OPERATING POSITION :-	15.6 (0.61)
-----------------------	-------------

MOVEMENT DIFFERENTIAL :- $0.4(0.016)MAX$

E	DIFFERENTIAL	
	OVERTRAVEL	DEPRESS

OVER TRAVEL	: - DEPRESS
(AVAILABLE)	TO CASE

TESTED AND STAMPED TO UL, CSA
AND ENEC REQUIREMENTS

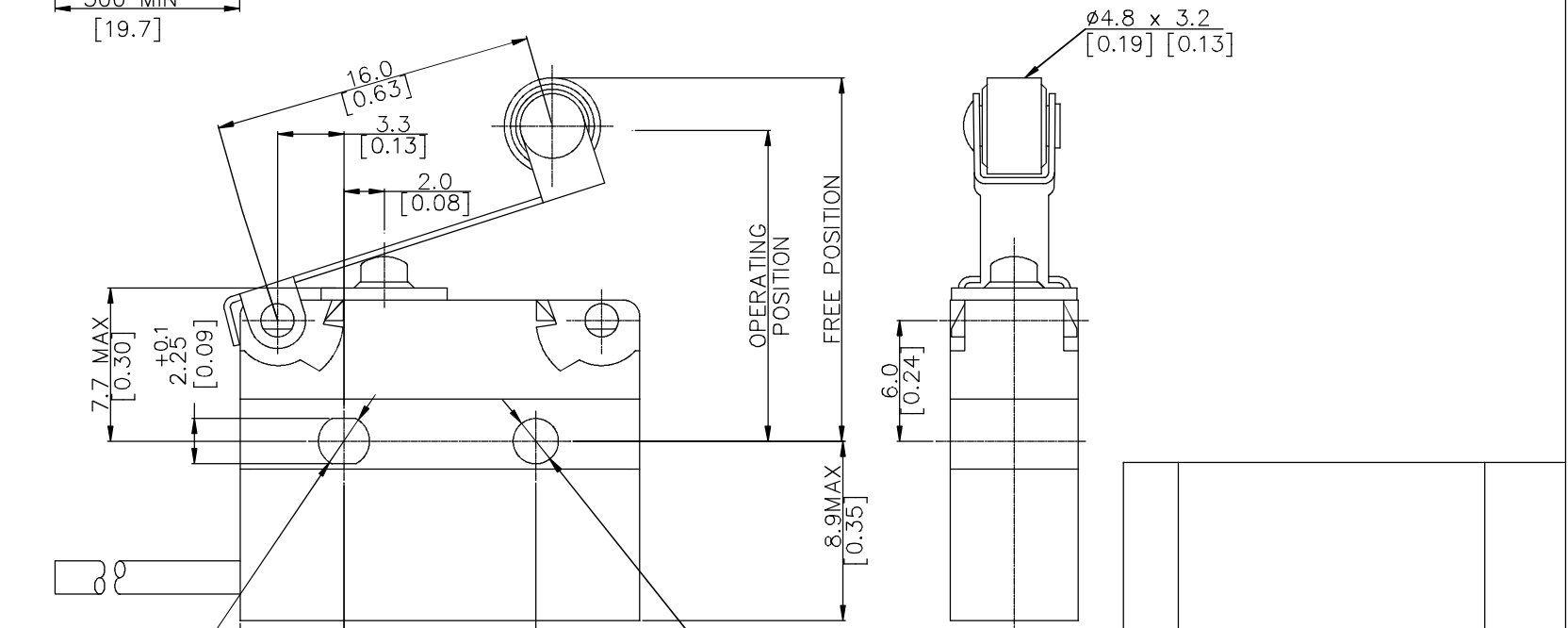
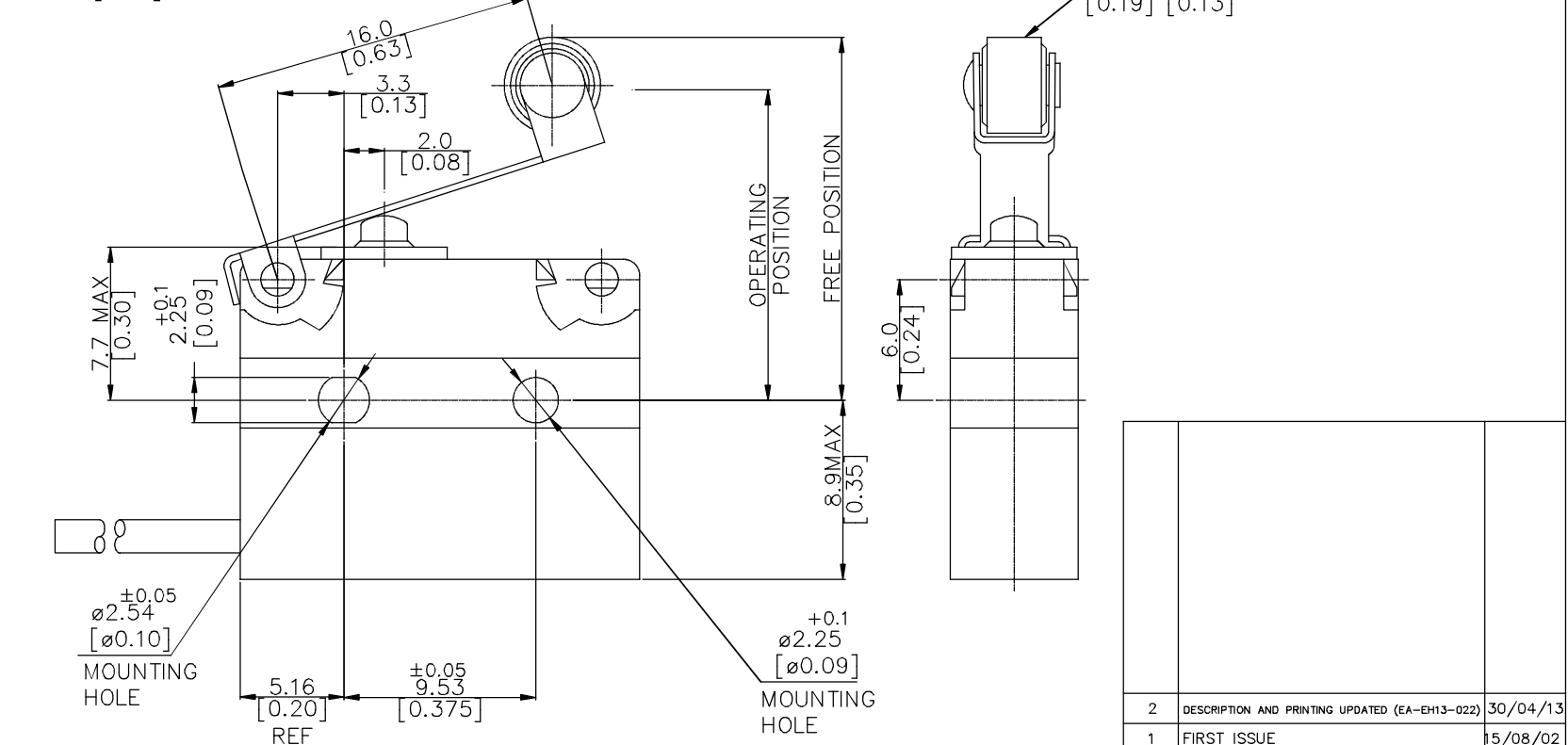
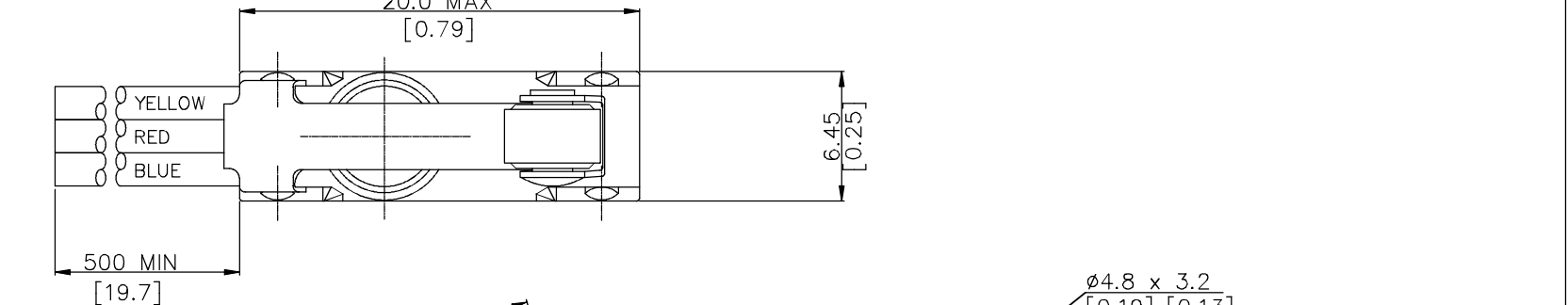
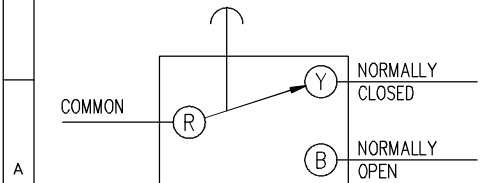
AND ENG. REQUIREMENTS	
1.	
2.	
3.	
4.	
5.	
6.	
7.	
8.	
9.	
10.	
11.	
12.	
13.	
14.	
15.	
16.	
17.	
18.	
19.	
20.	
21.	
22.	
23.	
24.	
25.	
26.	
27.	
28.	
29.	
30.	
31.	
32.	
33.	
34.	
35.	
36.	
37.	
38.	
39.	
40.	
41.	
42.	
43.	
44.	
45.	
46.	
47.	
48.	
49.	
50.	
51.	
52.	
53.	
54.	
55.	
56.	
57.	
58.	
59.	
60.	
61.	
62.	
63.	
64.	
65.	
66.	
67.	
68.	
69.	
70.	
71.	
72.	
73.	
74.	
75.	
76.	
77.	
78.	
79.	
80.	
81.	
82.	
83.	
84.	
85.	
86.	
87.	
88.	
89.	
90.	
91.	
92.	
93.	
94.	
95.	
96.	
97.	
98.	
99.	
100.	

APPROVAL RATING :-
3A (250VAC (UL))

3A/250VAC (UL)
5A/250VAC (ENEC)

C	
---	--

B	
---	--



Technical drawing of a mounting plate. The drawing shows a rectangular plate with two mounting holes. The dimensions are as follows:


- Overall width: 9.53 (tolerance ± 0.05)
- Overall height: 8.9 MAX (tolerance $[0.35]$)
- Distance from left edge to center of first hole: 5.16 (tolerance $[0.20]$)
- Distance between centers of two holes: 9.53 (tolerance ± 0.05)
- Distance from right edge to center of second hole: 5.16 (tolerance $[0.20]$)
- Radius of mounting holes: $\varnothing 2.54$ (tolerance $[\varnothing 0.10]$)
- Radius of mounting holes: $\varnothing 2.25$ (tolerance $[\varnothing 0.09]$)

The drawing includes a section line and a detail view of the mounting hole. The text "MOUNTING HOLE" is used to label the holes.

2	DESCRIPTION AND PRINTING UPDATED (EA-EH13-022)	30/04/13
1	FIRST ISSUE	15/08/02
ISSUE	REVISION	DATE

Smart solutions for comfort and safety

Saia-Burgess Gateshead Limited
Dukesway, Team Valley Trading Estate
Gateshead, Tyne & Wear NE11 0UB
Tel: +44 (0) 191 401 6100
Fax: +44 (0) 191 401 6322
www.saia-burgess.co.uk

 PROJECTION


DO NOT SCALE !

THIS DRAWING MUST ONLY BE
AMENDED ON A CAD SYSTEM

ALL DIMENSIONS SPECIFIED
IN MILLIMETRES

Smart solutions for comfort and safety

Saia-Burgess Gateshead Limited
Dukesway, Team Valley Trading Estate
Gateshead, Tyne & Wear NE11 0UB
Tel: +44 (0) 191 401 6100
Fax: +44 (0) 191 401 6322
www.saia-burgess.co.uk

 PROJECTION

DO NOT SCALE !

THIS DRAWING MUST ONLY BE
AMENDED ON A CAD SYSTEM

ALL DIMENSIONS SPECIFIED
IN MILLIMETRES



Sala-Burgees Gateshead Limited
Dukesway, Team Valley Trading Estate
Gateshead, Tyne & Wear NE11 0LB

Dukesway, Team Valley Trading Estate
Gateshead, Tyne & Wear NE11 0UB
Tel: +44 (0) 191 401 6100

THIS DRAWING MUST ONLY BE
AMENDED ON A CAD SYSTEM

Fax: +44 (0) 191 401 6322 www.saia-burgess.co.uk	ALL DIMENSIONS SPECIFIED IN MILLIMETRES
---	--

NO DECIMAL PLACE	± 0.50
1 DECIMAL PLACES	± 0.25
2 DECIMAL PLACES	± 0.15
ANGULAR	$\pm 1^\circ$
INCH - OUNCE UNITS [IN BRACKETS]	

NO DECIMAL PLACE	± 0.50
1 DECIMAL PLACES	± 0.25

NO DECIMAL PLACES	±0.05
1 DECIMAL PLACES	±0.25
2 DECIMAL PLACES	±0.15

1 DECIMAL PLACES	± 0.15
2 DECIMAL PLACES	± 0.15
ANGULAR	$\pm 1^\circ$

ANGULAR $\pm 1^\circ$

INCH - OUNCE UNITS [IN BRACKETS]

		APPROVED	
DRAWN	T.BELL.	CHECKED BY	
DATE	31/07/03	ENGINEERING	
SCALE	4/1	QUALITY ASSURANCE	

DRAWN	T.BELL.	CHECKED BY	

DRAWN	T.BELL.	CHECKED BY	

DRAWN	T.BELL.	CHECKED BY	

DATE	31/07/03	ENGINEERING	

DATE	31/07/03	ENGINEERING	

DATE	31/07/03	ENGINEERING	

SCALE	4/1	QUALITY ASSURANCE	
-------	-----	-------------------	--

SCALE	4/1	QUALITY ASSURANCE	
-------	-----	-------------------	--

SCALE	4/1	QUALITY ASSURANCE	
-------	-----	-------------------	--

V4NSYRUL	
Drg No :- C 44600	A3

V4NSYRUL	
Drg No :- C 44600	A3

[illegible]

Drg No :- C 44600	A3
-------------------	----