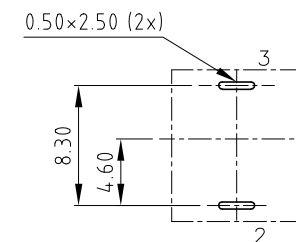
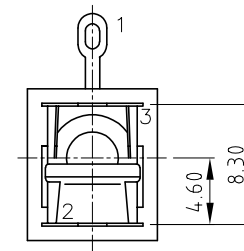
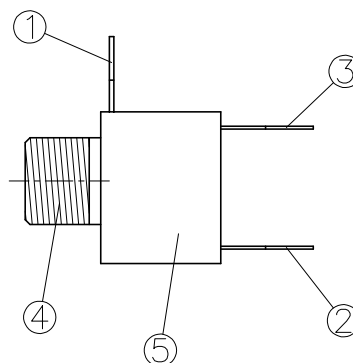
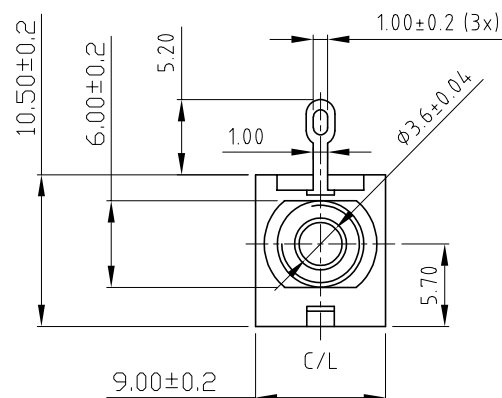
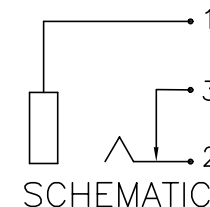
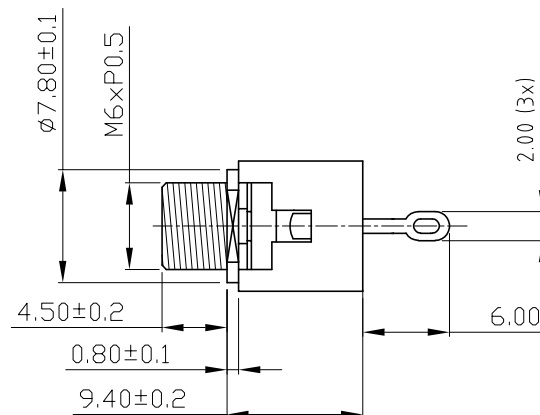
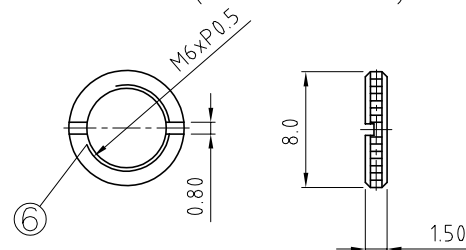


ISS.	AMEND	DATE
1	ISSUED	04/11/20

NUT (UNASSEMBLED)



Pin Hole Layout

6.	M6 Nut	1.5T Brass	1	Gold Plated
5.	Housing	POM	1	Ivory Colour
4.	Barrel(W/Thread)	Brass	1	Gold Plated
3.	Ring Spring	0.2T Phosphor Bronze	1	Gold Plated
2.	Tip Spring	0.2T Phosphor Bronze	1	Gold Plated
1.	Earth Terminal	0.3T Brass	1	Gold Plated
No.	Description	Material	Qty	Finish

## SPECIFICATIONS

Contact Resistance : 30mΩ max  
 Insulation Resistance : 100MΩ min. at DC 500V  
 Dielectric Withstanding Voltage: AC 500V for one minute

TOLERANCE :±0.3mm UNLESS OTHERWISE SPECIFIED

**RoHS**  
 COMPLIANT

**TOLERANCE**  
 NO DEC. PLACE ±  
 1 DEC. PLACE ±  
 2 DEC. PLACE ±  
 HOLE Ø ±  
 ANGLES ±  
 UNLESS  
 OTHERWISE STATED

**Cliff Electronic Components Ltd.**

76 Holmesthorpe Avenue, Holmesthorpe Industrial Estate,  
 Redhill, Surrey, RH1 2PF, England, UK  
 Tel: 01737-771375 Fax: 01737-766012 Website: www.cliffuk.co.uk

DIMENSIONS IN MILLIMETERS UNLESS OTHERWISE STATED. WORK TO DIMENSIONS. REMOVE ALL BURRS. IF IN DOUBT ASK.

3rd ANGLE PROJECTION:



DO NOT SCALE

MATERIAL: SEE TABLE

FINISH: SEE TABLE

DRAWN: T.J.O.

APPROVED: D.P.J.

TITLE: Ø3.5mm MONO JACK SOCKET GOLD (JYO-35)

DRWG. No. **FC6812G**

FORM: A4DRWGH

THE CONTENTS OF THIS DOCUMENT MUST NOT BE COPIED OR DISCLOSED  
 TO A 3rd PARTY WITHOUT WRITTEN PERMISSION OF CLIFF UK. © 1990