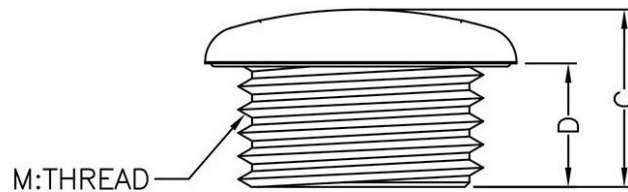
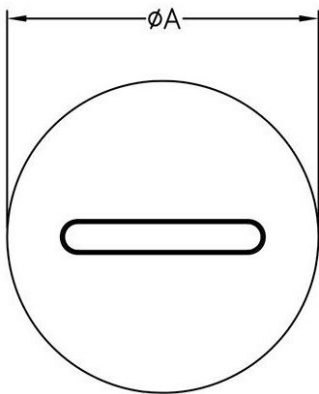




FIX-SPMA

- MATERIAL: NYLON 66(UL)
- FLAME CLASS: 94V-2
- COLOR: BLACK
- UNIT: mm



PART NO	A	C	D	M
FIX-SPMA-10	15	12	8.5	M10X1.5
FIX-SPMA-12	15	10	6	M12X1.5
FIX-SPMA-16	20	11.5	8	M16X1.5
FIX-SPMA-20	24	12.5	7.5	M20X1.5
FIX-SPMA-25	30	15	11	M25X1.5
FIX-SPMA-32	37	15.7	10.8	M32X1.5

