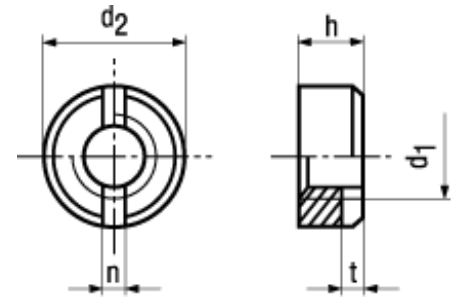


DIN 546



## BN 220


### Slotted round nuts

Steel

zinc plated blue

- ~UNI 5719
- ~ČSN 021444



 With a screwdriver according to DIN 3115

Article#	d <sub>1</sub>	d <sub>2</sub>	h	n	t min.
1100696	M2	4,5	2	1	0,8
1100718	M2,5	5,5	2,2	1,2	0,9
1100726	M3	6	2,5	1,2	1
1100742	M4	8	3,5	1,4	1,2
1100750	M5	9	4,2	2	1,5
1100769	M6	11	5	2,5	2
1100777	M8	14	6,5	3	2,5
1100785	M10	18	8	3,5	3,2