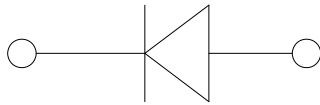
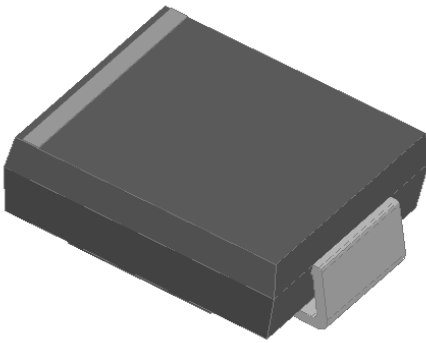


Surface Mount General Purpose Rectifier



Features

- High efficiency
- High current capability
- High reliability
- High surge current capability
- Low power loss
- Solder dip 260 °C max. 10 s, per JESD 22-B106

Mechanical Data

- **Package:** DO-214AB (SMC)
- Molding compound meets UL 94 V-0 flammability rating, RoHS-compliant
- **Terminals:** Tin plated leads, solderable per J-STD-002 and JESD22-B102
- **Polarity:** Color band denotes cathode end

■Maximum Ratings (Ta=25°C Unless otherwise specified)

PARAMETER	SYMBOL	UNIT	GS3A	GS3B	GS3D	GS3G	GS3J	GS3K	GS3M
Device marking code			GS3A	GS3B	GS3D	GS3G	GS3J	GS3K	GS3M
Repetitive Peak Reverse Voltage	V_{RRM}	V	50	100	200	400	600	800	1000
Average Rectified Output Current @60Hz sine wave, Resistance load, Ta (FIG.1)	I_O	A	3.0						
Forward Surge Current (Non-repetitive) @ 60Hz Half-sine wave, 1 cycle, Ta=25°C	I_{FSM}	A	100						
Storage Temperature	T_{stg}	°C	-55 ~ +150						
Junction Temperature	T_j	°C	-55 ~ +150						

■Electrical Characteristics (Ta=25°C Unless otherwise specified)

PARAMETER	SYMBOL	UNIT	TEST CONDITIONS	GS3A	GS3B	GS3D	GS3G	GS3J	GS3K	GS3M
Maximum instantaneous forward voltage drop per diode	V_F	V	$I_{FM}=3.0A$	1.1						
Maximum DC reverse current at rated DC blocking voltage per diode	I_R	μA	Ta=25°C	5						
			Ta=100°C	50						

■Thermal Characteristics (Ta=25°C Unless otherwise specified)

PARAMETER	SYMBOL	UNIT	GS3A	GS3B	GS3D	GS3G	GS3J	GS3K	GS3M
Thermal Resistance	Junction to ambient	$R_{\theta JA}$	47 ⁽¹⁾						
	Junction to lead	$R_{\theta JL}$	13 ⁽¹⁾						

Note(1)

Thermal resistance from junction to ambient and from junction to lead mounted on P.C.B. with 0.6" x 0.6" (16 mm x 16 mm) copper pad areas



GS3A THRU GS3M

■ Ordering Information (Example)

PREFERRED P/N	PACKAGE CODE	UNIT WEIGHT(g)	MINIMUM PACKAGE(pcs)	INNER BOX QUANTITY(pcs)	OUTER CARTON QUANTITY(pcs)	DELIVERY MODE
GS3A~GS3M	F1	Approximate 0.248	3000	6000	42000	13" reel

■ Characteristics(Typical)

FIG.1: Io-TL Curve

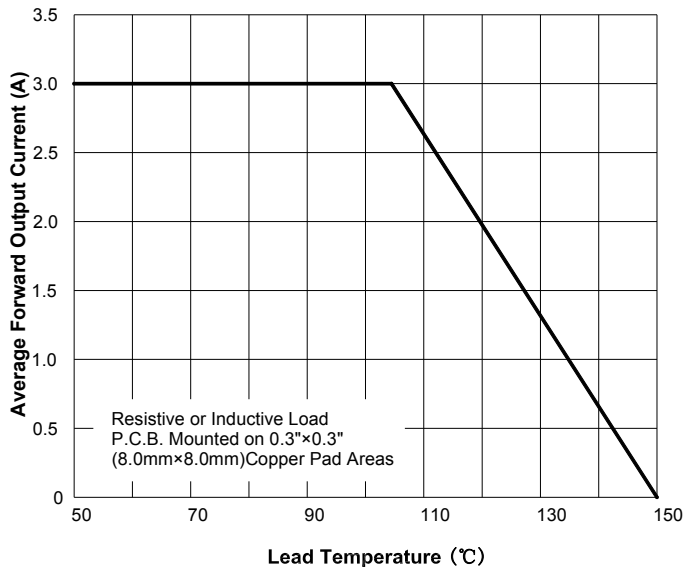


FIG.2: Forward Surge Current Capadility

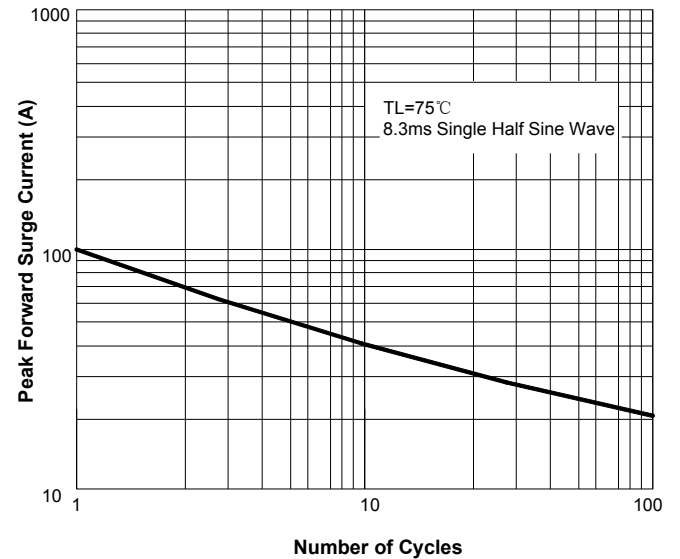


FIG.3: Forward Voltage

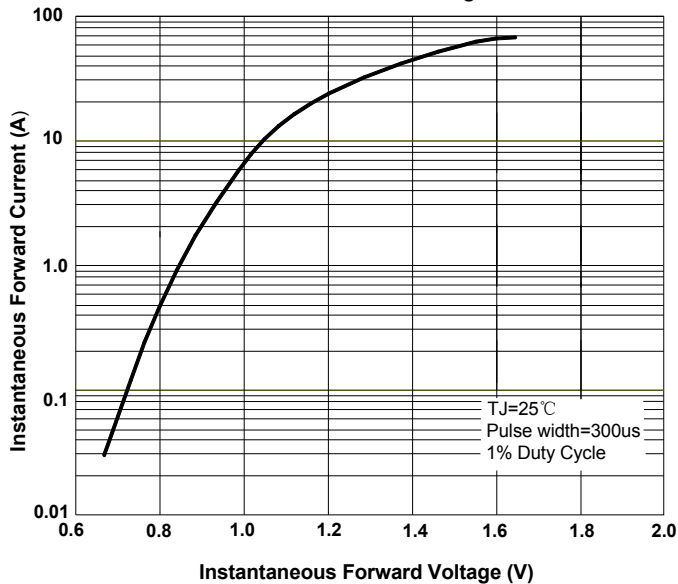
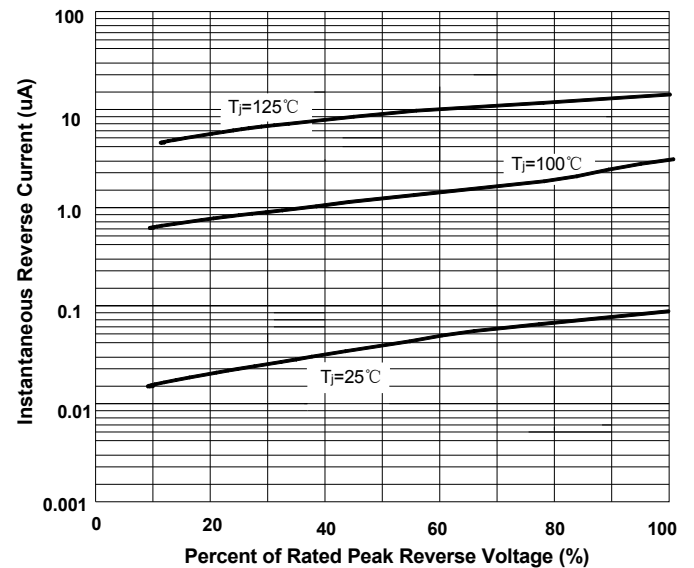
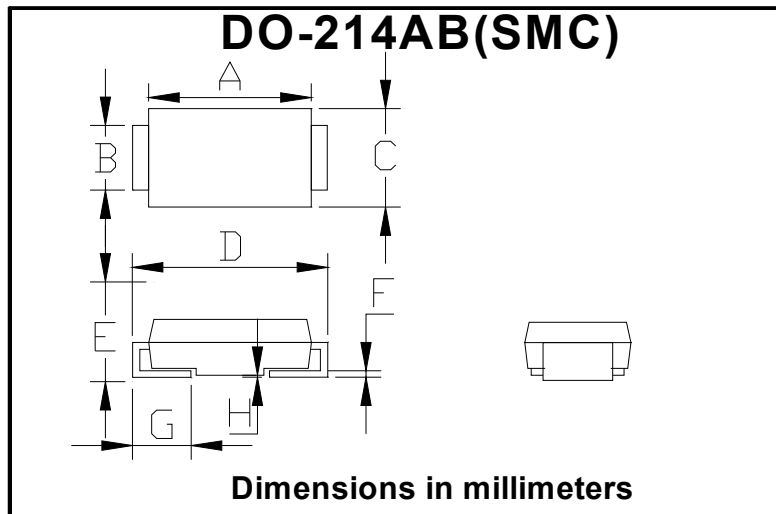


FIG.4: Typical Reverse Characteristics



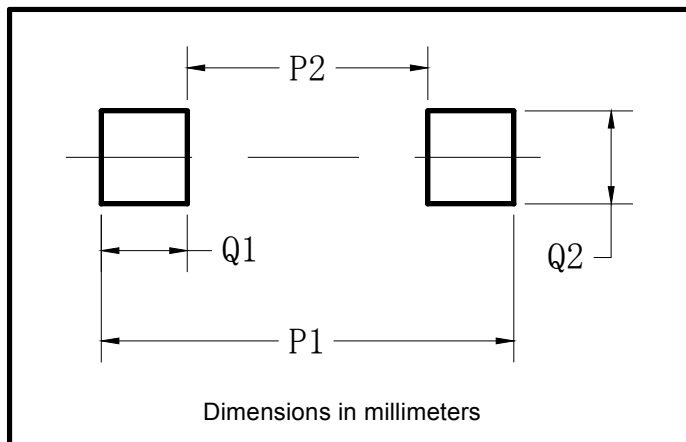


■ Outline Dimensions



DO-214AB (SMC)		
Dim	Min	Max
A	6.60	7.11
B	2.85	3.27
C	5.59	6.22
D	7.75	8.13
E	1.99	2.61
F	0.15	0.31
G	0.76	1.52
H	0.10	0.20

■ Suggested pad layout



Dim	Min
P1	9.9
P2	3.84
Q1	3.03
Q2	3.82



GS3A THRU GS3M

Disclaimer

The information presented in this document is for reference only. Yangzhou Yangjie Electronic Technology Co., Ltd. reserves the right to make changes without notice for the specification of the products displayed herein to improve reliability, function or design or otherwise.

The product listed herein is designed to be used with ordinary electronic equipment or devices, and not designed to be used with equipment or devices which require high level of reliability and the malfunction of which would directly endanger human life (such as medical instruments, transportation equipment, aerospace machinery, nuclear-reactor controllers, fuel controllers and other safety devices), Yangjie or anyone on its behalf, assumes no responsibility or liability for any damages resulting from such improper use of sale.

This publication supersedes & replaces all information previously supplied. For additional information, please visit our website [http:// www.21yangjie.com](http://www.21yangjie.com) , or consult your nearest Yangjie's sales office for further assistance.