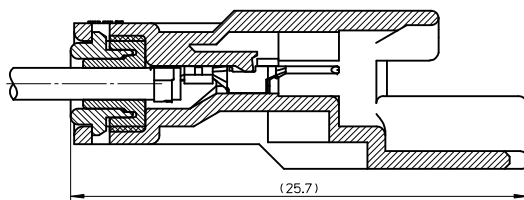
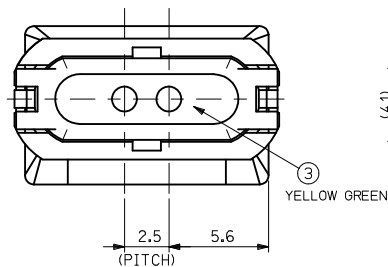
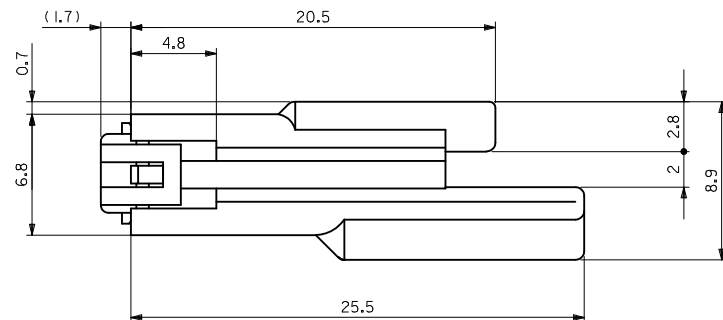


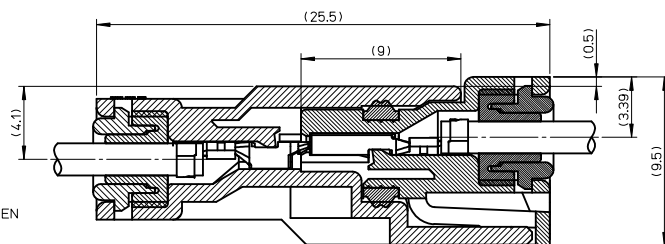
52116-0410, 52116-0411



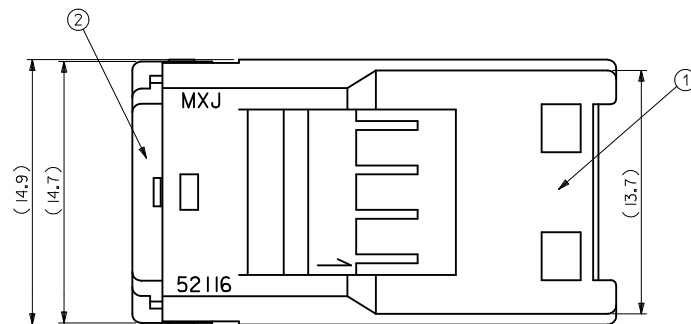
断面A-A (端子装着状態)  
SECTION A-A (TERM.ASSEMBLY DRAWING)



52116-0413



嵌合状態図  
FULLY MATED CONDITION



# 注 記 NOTE

- 適合端子 : 50038-8\*00  
APPLICABLE TERMINAL : 50038-8\*00
- 嵌合相手 : 52117-041\*  
MATES WITH : 52117-041\*
- 製品仕様書 : PS-52117-007  
PRODUCT SPECIFICATION : PS-52117-007
- 取扱説明書 : AS-52117-001  
APPLICATION SPECIFICATION : AS-52117-001
- ELV及RoHS適合品  
ELV AND RoHS COMPLIANT

シリコンゴム SILICONE	図参照 SEE DRAWING	ワイヤーエンドシール WIRE END SEAL	③
ポリエステル (15%G.F.) POLYESTER (15%G.F.)	表参照 SEE CHART	CAP	②
ポリエステル (15%G.F.) POLYESTER (15%G.F.)	表参照 SEE CHART	プラグハウジング PLUG HOUSING	①
材 料 MATERIAL	色 COLOR	名 称 TITLE	
構成部品 COMPONENTS			

REVISED & REDRAWN EC NO: JTR2012-0029 DRWN: S. INAKA CHKD: SANDO APPR: MAYAMAMOTO		DESCRIPTION	GENERAL TOLERANCES (UNLESS SPECIFIED)		DIMENSION STYLE MM ONLY		SCALE 5:1	DESIGN UNITS METRIC	THIRD ANGLE PROJECTION		
			10 UNDER	± 0.2	DRAWN BY Y. ASHIZAWA	DATE 1988/07/12	TITLE 2.5 WATERPROOF CONN. PLUG HSG ASSY W/POSITIVE LOCK				
			10 OVER 30 UNDER	± 0.25	CHECKED BY M. SAKANO	DATE 1994/04/12					
			30 OVER	± 0.3	APPROVED BY MAYAMAMOTO	DATE 2012/01/18					
			ANGULAR ± 3 °		MATERIAL NO.		MOLEX MOLEX INCORPORATED		DOCUMENT NO.		SHEET NO.
D		REV	DRAFT WHERE APPLICABLE MUST REMAIN WITHIN DIMENSIONS		SEE CHART		SD-52116-002				
			SIZE A2		THIS DRAWING CONTAINS INFORMATION THAT IS PROPRIETARY TO MOLEX INCORPORATED AND SHOULD NOT BE USED WITHOUT WRITTEN PERMISSION						

黒 BLACK	52116-0413	2
黒 BLACK	52116-0411	4
白 WHITE	52116-0410	4
色 COLOR	MATERIAL NO.	極数 CKT