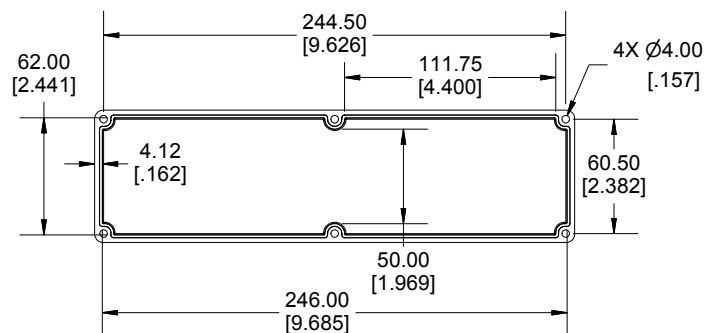
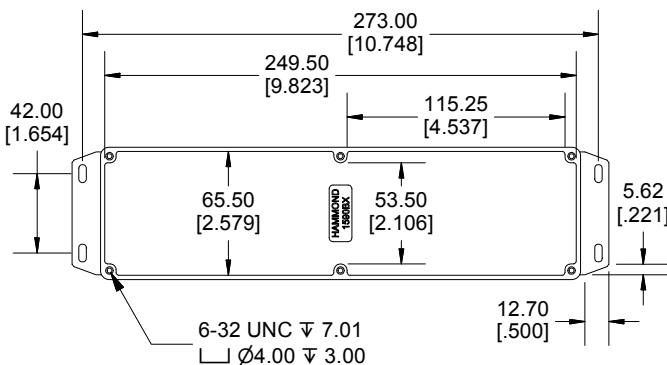
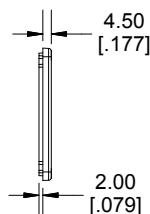


### SECTION B-B SIDE VIEW



## INSIDE LID



**Dimensions:**  
mm  
[inches]

Enclosures can be Factory Modified ( Milling, Drilling, Printing etc.)  
Contact Factory [mjm@hammondmgf.com](mailto:mjm@hammondmgf.com) for quotes  
Solid models of this enclosure available in STEP or IGES.  
(Part number and text placement/orientation on our products are subject to change,  
we do not recommend using them as a locating reference for modification purposes)

**NOTE**

Purchased assembly includes box, lid and 6 cover screws.  
Box and lid are made from Diecast Aluminum Alloy.  
Silicone Gasket supplied with liquid resistant enclosure.

**Recommended Torque: 50-55 cN.m [71-78 ozf.in]**

**Recommended Torque with Gasket : 25-30 cN.m [36-43 ozf.in]**

## PART NUMBERS

## 1590BXF Enclosure

Natural Finish Enclosure	1590BXF
Black Textured Enclosure	1590BXFBK

### 1590BXF Liquid Resistant Enclosure (Silicone Gasket)

Natural Finish Enclosure	1590WBXF
Black Textured Enclosure	1590WBXFBK

## ACCESSORIES

## Liquid Resistant Cover Screws

<b>Stainless Steel Cover Screws (Pkg 100)</b> <b>[6-32 x 1/2" With O-Ring]</b>	1590WMS100
<b>Black Stainless Steel Cover Screws (Pkg 100)</b> <b>[6-32 x 1/2" With O-Ring]</b>	1590WMS100B

### Standard Cover Screws

Plated Cover Screws (Pkg 100) [6-32 x 1/2"]	1590MS100
Black Cover Screws (Pkg 100) [6-32 x 1/2"]	1590MS100BK



**HAMMOND  
MANUFACTURING®**

1590BXF

[www.hammondmfg.com](http://www.hammondmfg.com)