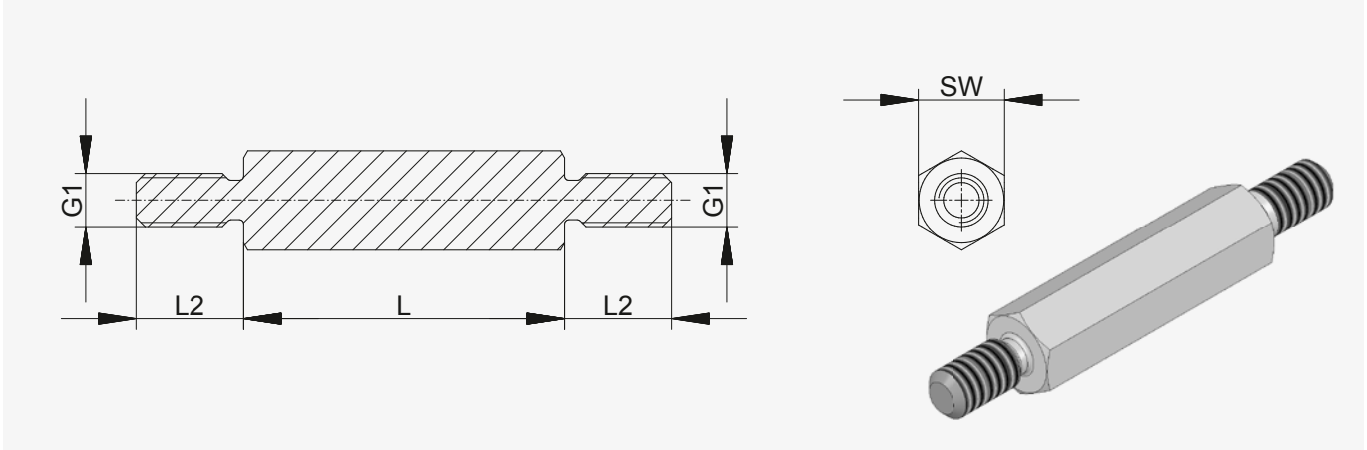


Spacer bolts with metric threads

Brass



**Spacer bolts**  
**Type** hexagonal  
**Design** external / external  
with undercut DIN 76-B  
(optional without undercut)  
**Material** brass CuZn39Pb3  
**Surface** nickel-plated (optional uncoated)  
**MOQ** 100 pcs

External thread lengths [mm]	
G1	L2
M2	5
M2.5	6
M3	6*, 8
M4	8
M5	8
M6	10
M8	14

\* see page 6

Minimum tensile strength: 430 N/mm²  
Tolerance for length dimensions: +/- 0.1 mm

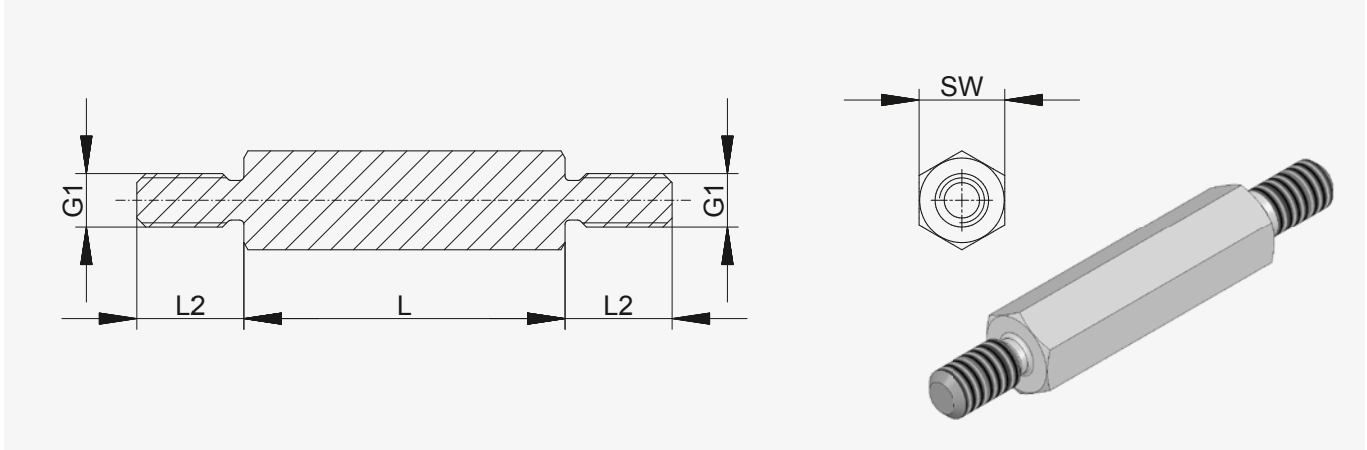
Order number	Hexagonal size (SW)	Thread (G1)	Standard lengths in mm (L)																					
411 × (length)	SW4	M2	05	06	08	10	12	15	18	20	25	30	35	40	45	50								
4112 ×	SW4	M2.5	05	06	08	10	12	15	18	20	25	30	35	40	45	50								
412 ×	SW5	M2.5	05	06	08	10	12	15	18	20	25	30	35	40	45	50	55	60						
413 ×	SW5	M3	05	06	08	10	12	15	18	20	25	30	35	40	45	50	55	60						
414 ×	SW5.5	M3	05	06	08	10	12	15	18	20	25	30	35	40	45	50	55	60	65	70				
415 ×	SW6	M3	05	06	08	10	12	15	18	20	25	30	35	40	45	50	55	60	65	70				
416 ×	SW7	M4	05	06	08	10	12	15	18	20	25	30	35	40	45	50	55	60	65	70	75	80	85	90
418 ×	SW8	M5			08	10	12	15	18	20	25	30	35	40	45	50	55	60	65	70	75	80	85	90
419 ×	SW10	M6				10	12	15	18	20	25	30	35	40	45	50	55	60	65	70	75	80	85	90
4113 ×	SW13	M8					15			20	25	30	35	40	45	50	55	60	65	70	75	80	85	90

Order sample: 411 x 10 = DAA / brass / SW4 / M2 x 10



Spacer bolts with metric threads

Steel



**Spacer bolts**  
**Type** hexagonal  
**Design** external / external  
with undercut DIN 76-B  
(optional without undercut)  
**Material** steel 11SMnPb30  
**Colour** zinc-plated (optional uncoated)  
**MOQ** 100 pcs

External thread lengths [mm]	
G1	L2
M2	5
M2.5	6
M3	6
M4	8
M5	8
M6	10
M8	14

Minimum tensile strength: 500 N/mm²  
Tolerance for length dimensions: +/- 0.1 mm  
(DIN 2678-m applies for SW13)

Order number	Hexagonal size (SW)	Thread (G1)	Standard lengths in mm (L)																							
421 × (length)	SW4	M2	05	08	10	12	15	18	20	25	30	35	40													
4212 ×	SW4	M2.5	05	08	10	12	15	18	20	25	30	35	40													
422 ×	SW5	M2.5	05	08	10	12	15	18	20	25	30	35	40	45	50											
423 ×	SW5	M3	05	08	10	12	15	18	20	25	30	35	40	45	50											
424 ×	SW5.5	M3	05	08	10	12	15	18	20	25	30	35	40	45	50	55	60	65	70							
425 ×	SW6	M3	05	08	10	12	15	18	20	25	30	35	40	45	50	55	60	65	70	75	80	85	90	95	100	
426 ×	SW7	M4	05	08	10	12	15	18	20	25	30	35	40	45	50	55	60	65	70	75	80	85	90	95	100	
427 ×	SW8	M4	05	08	10	12	15	18	20	25	30	35	40	45	50	55	60	65	70	75	80	85	90	95	100	
428 ×	SW8	M5		08	10	12	15	18	20	25	30	35	40	45	50	55	60	65	70	75	80	85	90	95	100	
429 ×	SW10	M6			10	12	15	18	20	25	30	35	40	45	50	55	60	65	70	75	80	85	90	95	100	
4213 ×	SW13	M8					15		20	25	30	35	40	45	50	55	60	65	70	75	80	85	90	95	100	

Order sample: 429 x 50 = DAA / steel / SW10 / M6 x 50

