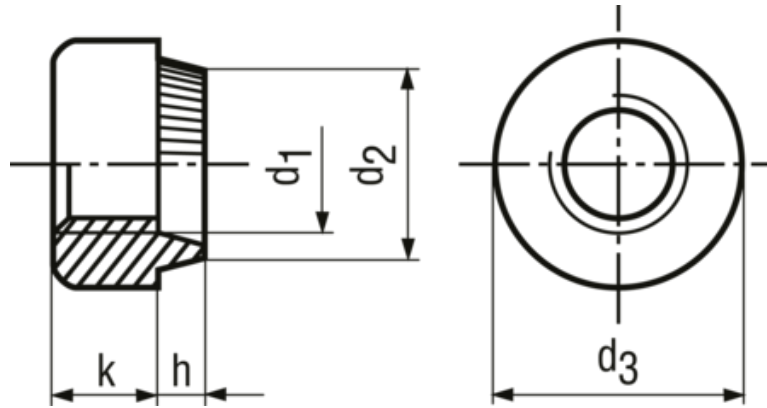


# Round rivet nuts

BN 639



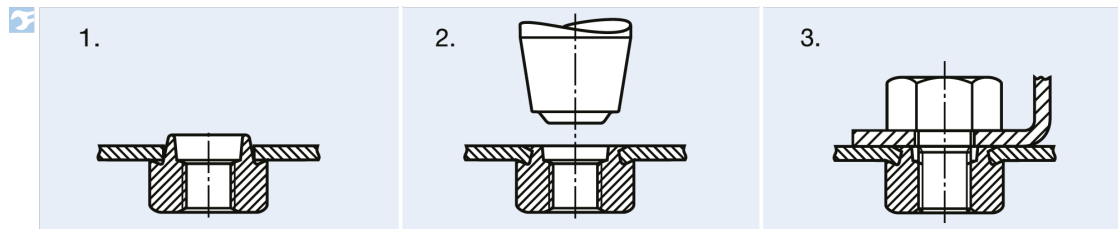
Material Stainless steel

Material type A1

Assembly notice

1. Drill or punch the bore, insert the round rivet nut.
2. Clinch the shaft with a riveting tool.
3. Assemble with workpiece.

Illustration assembly



Article no	Thread size d1	d2 max	d3	k	h~	Hole size	Sheet thickness
1242601	M3	5.8	7.9	3.2	2.3	6.1	0,5-1,6
1242628	M4	6.9	9.5	3.8	2.3	7.2	0,5-1,6
1242644	M6	9.5	12.7	5.7	2.5	9.8	0,5-1,6
1242636	M5	8.3	11.1	4.4	2.4	8.6	0,5-1,6