



|  |   |                    |
|--|---|--------------------|
| Identification                           | Type  | RJ45 F/F 8/8 Cat.6 |
|  | Part-No.  | 491075             |
|  |   |                    |
| Description                              | RJ45 panel connector for front installation 22.5 mm<br>female/female 1:1<br>Category 5e/6 |                    |
|  |   |                    |
| Technical data                           |   |                    |
| Nominal voltage                          | AC 24 V   |                    |
| Nominal voltage range                    | AC 150 V  |                    |
| Rated current                            | 1.5 A   |                    |
| Number of terminations                   | 8   |                    |
| Category                                 | 6   |                    |
| Contact type                             | 1 : 1   |                    |
| Shielding                                | 360° shielding  |                    |
|  |   |                    |
| General                                  |   |                    |
| Form                                     | RJ45  |                    |
| Pollution degree                         | 3   |                    |
| Insulation resistance                    | ≥100 MΩ   |                    |
| Contact resistance                       | ≤30 mΩ  |                    |
| Class of flammability according to UL 94 | V0  |                    |

10.08.2014 – Subject to technical modification

Part-No. 491075

USA: LUTZE INC.

13330 South Ridge Drive • Charlotte, NC 28273, USA

Tel. +1 (704) 504-0222 • Fax +1 (704) 504-0223

www.lutze.com • info@lutze.com

United Kingdom: LÜTZE Ltd.

Unit 3, Sandy Hill Park

Sandy Way, Amington • GB-Tamworth, Staffs B77 4DU

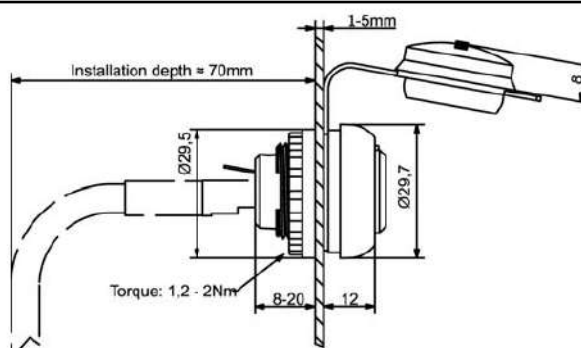
Tel. +44 (0)1827 31333-0 • Fax +44 (0)1827 31333-2

www.lutze.com • sales.gb@lutze.co.uk

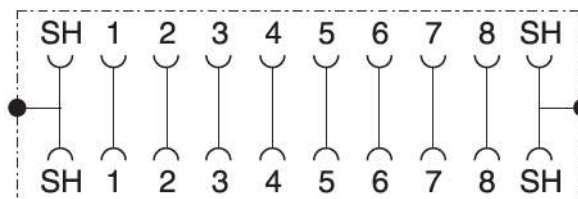
## Technical data sheet • Actuator sensor interface

|                             |   |
|-----------------------------|---|
| Protection class            | IP 65 and NEMA UL Type 12 in closed and IP 20 in inserted condition |
| Housing material            | PA-GF25; PBT GF20; cover TPU  |
| Cover                       | TPU   |
| Contact material            | CuSn, gold-plated   |
| Field installation          | Front plate cutout D=22.5mm   |
| Installation depth          | approx. 70 mm   |
| Cable construction          | 8 (4-pair)  |
| Storage temperature range   | -25 °C – 80 °C  |
| Operation temperature range | -25 °C – 70 °C  |
| Dimension                   | (?×D) 29.5 × 29 mm  |
| Mechanical service life     | <750 insertion cycles   |
| Weight (kg/piece)           | 0.016   |
| Approvals                   | cULus   |
| PU                          | 1   |

### Dimensions



### Circuit diagram



10.08.2014 – Subject to technical modification

Part-No. 491075

USA: LUTZE INC.

13330 South Ridge Drive • Charlotte, NC 28273, USA

Tel. +1 (704) 504-0222 • Fax +1 (704) 504-0223

www.lutze.com • info@lutze.com

United Kingdom: LÜTZE Ltd.

Unit 3, Sandy Hill Park

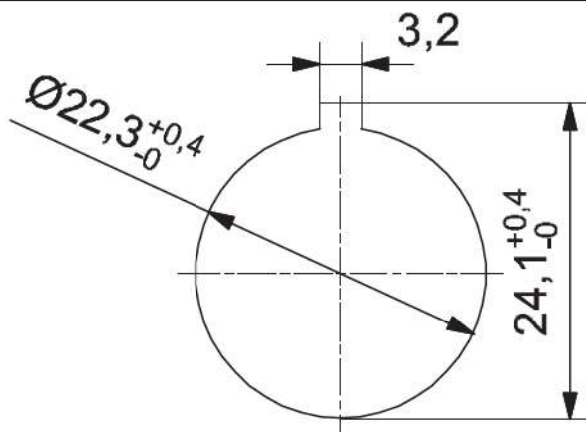
Sandy Way, Amington • GB-Tamworth, Staffs B77 4DU

Tel. +44 (0)1827 31333-0 • Fax +44 (0)1827 31333-2

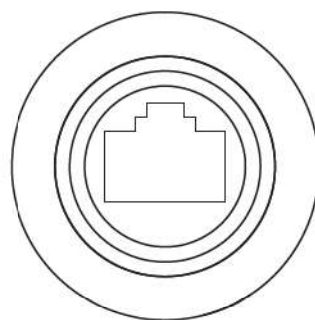
www.lutze.com • sales.gb@lutze.co.uk



Mounting diagram



front view:



Logo



10.08.2014 – Subject to technical modification

Part-No. 491075

USA: LUTZE INC.

13330 South Ridge Drive • Charlotte, NC 28273, USA

Tel. +1 (704) 504-0222 • Fax +1 (704) 504-0223

www.lutze.com • info@lutze.com

United Kingdom: LÜTZE Ltd.

Unit 3, Sandy Hill Park

Sandy Way, Amington • GB-Tamworth, Staffs B77 4DU

Tel. +44 (0)1827 31333-0 • Fax +44 (0)1827 31333-2

www.lutze.com • sales.gb@lutze.co.uk