

USB-panel connector



Identification	Type	USB-3.0 A/A F/F
	Part-No.	490112
Description		
	USB 3.0 panel connector with M22 thread for front installation	
	USB 3.0 female / female Type A/A	
	Type: USB-3.0 A/A F/F	
Technical data		
Rated voltage U _N	AC/DC 5 V	
Rated voltage max.	30 V	
Rated current	0.9 A	
Pole number	9	
Transfer rate	5 Gbit/s	
USB standard	3.0	
Contact type	1 : 1	
Shielding	shielded	
General		
Degree of pollution	3	
Insulation resistance	> 100 MΩ	
Contact resistance	< 30 mΩ	
Protection class	IP65 and NEMA UL Type 12 in closed and IP20 in inserted condition	

13.08.2018 – Subject to technical modification

Part-No. 490112

USA: LUTZE INC.

13330 South Ridge Drive • Charlotte, NC 28273, USA

Tel. +1 (704) 504-0222 • Fax +1 (704) 504-0223

www.lutze.com • info@lutze.com

United Kingdom: LÜTZE Ltd.

Unit 3, Sandy Hill Park

Sandy Way, Amington • GB-Tamworth, Staffs B77 4DU

Tel. +44 (0)1827 31333-0 • Fax +44 (0)1827 31333-2

www.lutze.com • sales.gb@lutze.co.uk



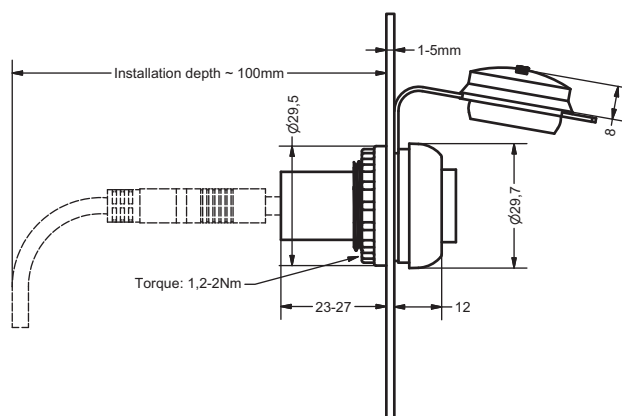
SYSTEMATIC TECHNOLOGY

Technical data sheet • Actuator sensor interface

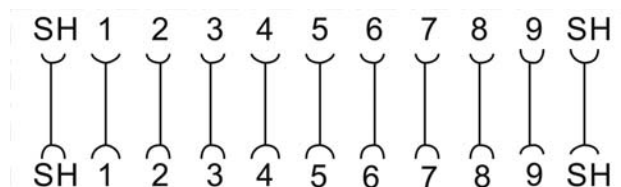
Housing material	PA, PVC
Cover	TPU
Contact material	CuSn, gold-plated
Mounting	Front installation
Installation depth	100 mm
Operation temperature range	-20 °C ... +70 °C
Storage temperature range	-25 °C ... +80 °C
Dimensions (Ø×d)	29.5 × 42.5 mm
Mechanical service life	>100 insertion cycles
Weight	0.009 kg/piece
Approvals	cULus (E326112)
PU	1 piece

Comments	Included in the delivery: captive safety cap
-----------------	--

Dimensions



PIN assignment



13.08.2018 – Subject to technical modification

Part-No. 490112

USA: LUTZE INC.

13330 South Ridge Drive • Charlotte, NC 28273, USA

Tel. +1 (704) 504-0222 • Fax +1 (704) 504-0223

www.lutze.com • info@lutze.com

United Kingdom: LÜTZE Ltd.

Unit 3, Sandy Hill Park

Sandy Way, Amington • GB-Tamworth, Staffs B77 4DU

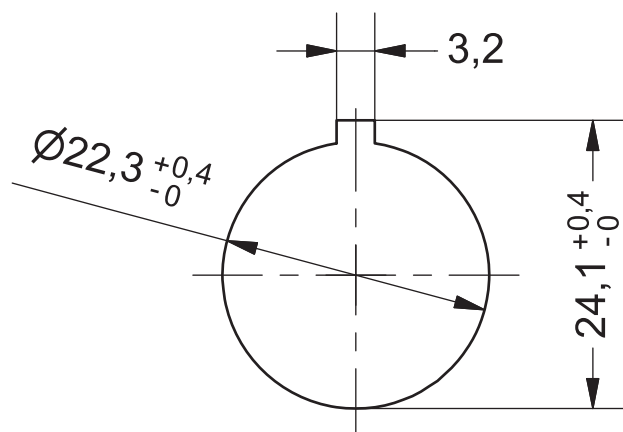
Tel. +44 (0)1827 31333-0 • Fax +44 (0)1827 31333-2

www.lutze.com • sales.gb@lutze.co.uk

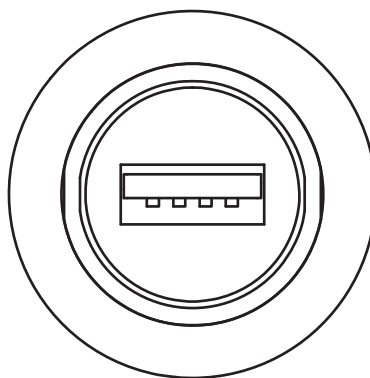


SYSTEMATIC TECHNOLOGY

Mounting diagram



front view



Symbols



13.08.2018 – Subject to technical modification

Part-No. 490112

USA: LUTZE INC.

13330 South Ridge Drive • Charlotte, NC 28273, USA

Tel. +1 (704) 504-0222 • Fax +1 (704) 504-0223

www.lutze.com • info@lutze.com

United Kingdom: LÜTZE Ltd.

Unit 3, Sandy Hill Park

Sandy Way, Amington • GB-Tamworth, Staffs B77 4DU

Tel. +44 (0)1827 31333-0 • Fax +44 (0)1827 31333-2

www.lutze.com • sales.gb@lutze.co.uk