
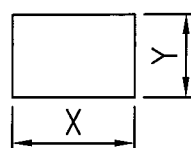
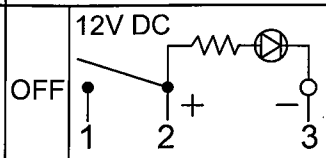
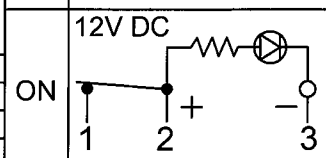
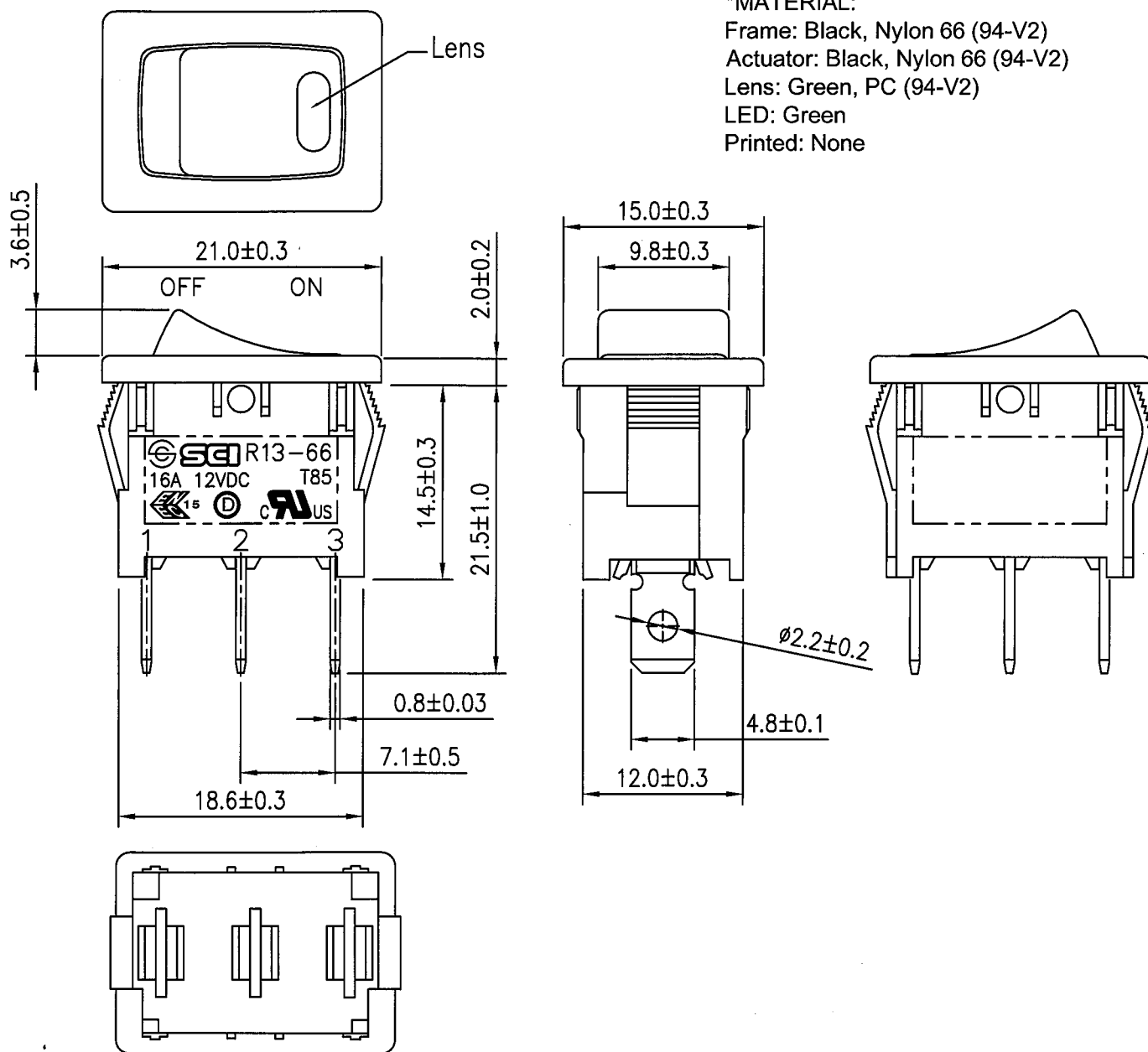


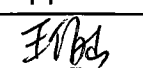

Rating	16A 12VDC 	Mounting Hole	Circuit Diagram	
Contact Resistance	50m ohm Max.		OFF	
Insulation Resistance	DC 500V 100M ohm Min.		ON	
Dielectric Strength	AC 1500V 1 minute			
Operation Temperature	-20°C~85°C			
Switch Function	3P SPST ON-OFF (LED dependent)			

Thickness	X	Y
0.75...1.25	19.2-0.1	13.2+0.1
1.25...2	19.4-0.1	13.2+0.1
2...3	19.8-0.1	13.2+0.1

**\*MATERIAL:**

Frame: Black, Nylon 66 (94-V2)  
 Actuator: Black, Nylon 66 (94-V2)  
 Lens: Green, PC (94-V2)  
 LED: Green  
 Printed: None



						△
						△
Date	Name	Description				NO
Drawn	Checked	Approved	SCI BOM NO.	Model Name	ROCKER SWITCH	
林玥呈			Customer No.	Model No.	R13-66B4-02	Rev. X0
9/7/17		9/7/17	Unit	mm	 Shin Chin Industrial Co., Ltd.	