

B

2.00 to 2.50mm (.079 to .098") Pitch

FEATURES AND SPECIFICATIONS

Features and Benefits

- Anti-fishhooking contact design
- 4 points of contact
- Low profile

Reference Information

Packaging: Reel or bag
Use With: 5102, 5207 and 5209 housings
Designed In: Millimeters

Electrical

Voltage: 250V
Current:

AWG	22	24	26	28
Amperes	3.0	2.5	2.0	1.5

Contact Resistance: 20mΩ max.
Dielectric Withstanding Voltage: 1000V AC/1 min.
Insulation Resistance: 1000 MΩ min.

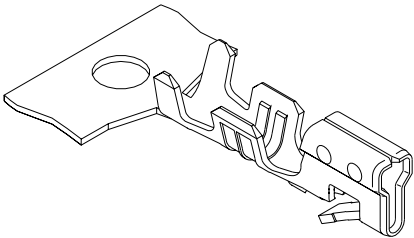
Physical

Contact: See Table
Plating: See Table
Operating Temperature: -40 to +105°C
Wire Range: 22 to 28 AWG
Strip Length: 2.6 to 3.2mm

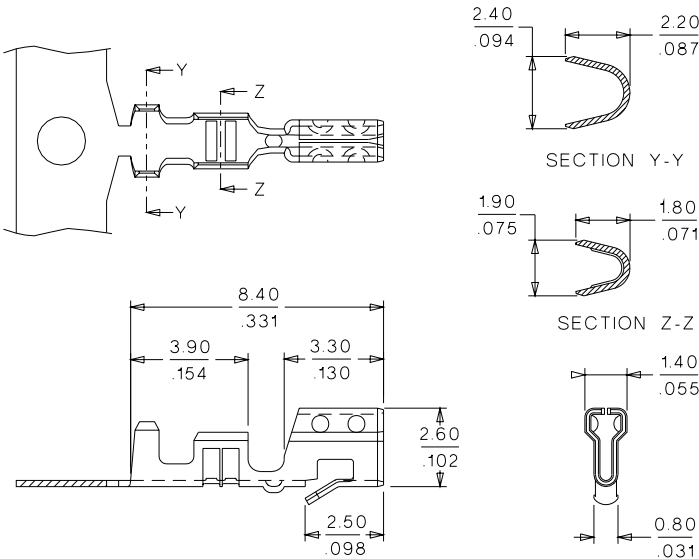


2.50mm (.098") Pitch
SPOX™
Wire-to-Board
Crimp Terminal

5103
Spring Box



CATALOG DRAWING (FOR REFERENCE ONLY)



ORDERING INFORMATION AND DIMENSIONS

Order No.	Terminal	Wire Gauge AWG	Insulation Diameter	Contact Material
08-70-0056	Reel	22-28	1.90 max.	Tin-Plated Brass
08-70-0057	Bag			
08-70-0058	Reel			Tin-Plated Phosphor Bronze
08-70-0059	Bag			