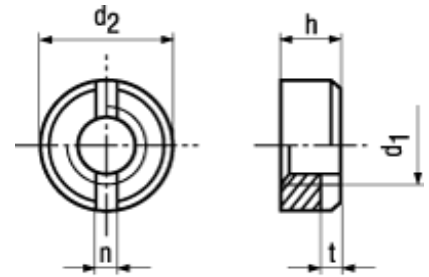




~DIN 546


**BN 531****Slotted round nuts**

Brass

nickel plated

- ~UNI 5719
- ~ČSN 021444



 With a screwdriver according to DIN 3115

| Article# | d ₁ | d ₂ | h | n | t min. |
|----------|----------------|----------------|-----|-----|--------|
| 1197843 | M2 | 4,5 | 2 | 1 | 0,8 |
| 1197878 | M2,5 | 5,5 | 2,2 | 1,2 | 0,9 |
| 1197894 | M3 | 6 | 2,5 | 1,2 | 1 |
| 1197916 | M4 | 8 | 3,5 | 1,4 | 1,2 |